



National

Programme of

Mid Day Meal in Schools

(MDMS)

Annual Work Plan &

Budget 2020-21

HIMACHAL PRADESH

**Mid Day Meal Programme
Annual Work Plan and Budget 2020-21**

Mid-Day Meal Scheme { AWP & B : 2020-21}		
Sr. No.	Title	
1	Introduction:	2-4
1.1	Brief history	5-7
1.2	Management Structure	7-8
1.3	Process of Plan Formulation at State and District level	8-10
2.	Description and assessment of the programme implemented in the current year (2019-20 and proposal for next year (2020-21) with reference to :	10
2.1	Regularity and wholesomeness of mid day meals served to children; interruptions if any and the reasons therefore problem areas for regular serving of meals and action taken to avoid Interruptions in future.	11-13
2.2	System for cooking , serving and supervising mid day meals in the schools	14
2.3	Details about weekly Menu	14
2.3.1	Weekly Menu – Day wise	14
2.3.2	Additional Food items provided (fruits/milk/any other items), if any from State/UT resources. Frequency of their serving along with per unit cost per day.	15
2.3.3	Usage of Double Fortified Salt and Fortified Edible Oil; their availability and constraints, if any, for procuring these items.	15
2.3.4	At what level menu is being decided / fixed,	15
2.3.5	Provision of local variation in the menu, Inclusion of locally available ingredients/items in the menu as per the liking/taste of the children.	15
2.3.6	Time of serving meal	15
2.4	Fund Flow Mechanism, System for release of funds (Central share and State share)	16
2.4.1	Existing mechanism for release of funds up to school/ implementing agency levels.	16
2.4.2	Mode of release of funds at different levels.	17
2.4.3	Dates when the fund were released to District/Block /Gram Panchayat and finally to the Cooking Agency/School.	18
2.4.4	Reasons for delay in release of funds at different levels.	18
2.4.5	In case of delay in release of funds from State/Districts, how the scheme has been implemented by schools/ implementing agencies.	18
2.4.6	Initiatives taken by the State for pre-positioning of funds with the implementing agencies in the beginning of the year.	18
2.5	Food grains management.	18
2.5.1	Time lines for lifting of food grains from FCI Depot- lifting calendar of food grains .	18-19
2.5.2	System for ensuring lifting of FAQ food grains (Joint inspections at the time of lifting etc.)	19
2.5.3	Is there any incident when FAQ food grain was not provided by FCI. If so, the action taken, by the State/District to get such foodgrain replaced with FAQ food grain. How the food grain of	19

	FAQ was provided to implementing agencies till replacement of inferior quality of food grain from FCI was arranged.	
2.5.4	System for transportation and distribution of food grains.	20
2.5.5	Whether unspent balance of food grains with the schools is adjusted from the allocation of the respective implementing agencies (Schools/SHGs/Centralized Kitchens) Number of implementing agencies receiving food grains at doorstep level.	21
2.5.6	Storage facility at different levels in the District/Block/Implementing agencies after lifting of food grains form FCI depot.	21
2.5.7	System of fortification of foodgrains and their costing and logistics arrangement.	21
2.5.8	Challenges faced and plan to overcome them.	21
2.6	Payment of cost of food grains to FCI.	22
2.6.1	System for payment of cost of food grains to FCI; whether payments made at district level or State level.	22
2.6.2	Status of pending bills of FCI of the previous year (s) and the reasons for pendency.	22
2.6.3	Timelines for liquidating the pending bills of previous year(s)	22
2.6.4	Whether meetings are held regularly in the last week of the month by the District Nodal Officers with FCI as per guidelines dated 10.02.2010 to resolve the issues relating to lifting , quality of food grains and payment of bills.	23
2.6.5	Whether the District Nodal Officers are submitting the report of such meeting to State Head Quarter by 7th of next month.	23
2.6.6.	The process of reconciliation of payment with the concerned offices of FCI.	23
2.6.7	Relevant issues regarding payment to FCI.	23
2.6.8	Whether there is any delay in payment of cost of food grains to FCI. If so, the steps taken to overcome the delay.	23
2.7	Cook-cum-helpers.	23
2.7.1	Is there any difference in the number of cook-cum-helpers eligible for engagement as per norms and the CCH actually engaged.	23
2.7.2	System and mode of payment of honorarium to cook-cum-helpers and implementing agencies viz. NGOs/SHGs/Trust/Centralized kitchens etc.	24
2.7.3	Whether the CCH were paid on monthly basis.	24
2.7.4	Whether there was any instance regarding irregular payment of honorarium to cook-cum-helpers and reason thereof. Measures taken to rectify the problem.	24
2.7.5	Rate of honorarium to cook-cum-helpers.	25
2.7.6	Number of cook cum helpers having bank accounts.	25
2.7.7	Number of cook cum helpers receiving honorarium through their bank accounts.	25
2.7.8	Provisions for health check-ups of cook cum helpers.	25
2.7.9	Whether cook cum helpers are wearing head gears and gloves at the time of cooking of meals.	25-26
2.7.10	Modalities for apportionment of cook-cum-helpers engaged at school level and working at centralized kitchens, in case of schools being served through centralized kitchens.	26
2.7.11	Mechanisms adopted for training of cook cum helpers. Total number of trained cook cum helpers engaged in the cooking of	26-27

	MDMS. Details of the training modules; Number of Master Trainers available in the District; Number of trainings organized by the Master Trainers for training cook -cum - helpers.	
2.7.12	Whether any steps have been taken to enroll cook cum helpers under any social security schemes i.e. Pradhan Mantri Jan Dhan Yojna, Pradhan Mantri Suraksha Bima Yojna, Pradhan Mantri Jeevan Jyoti Bima Yojana etc. and numbers of cooks benefitted through the same.	28
2.8	Procurement and storage of cooking ingredients and condiments.	28
2.8.1	System for procuring good quality (pulses, vegetables including leafy ones, salt, condiments, oil etc. and other commodities.	28
2.8.2	Whether pulses are being procured from NAFED or otherwise.	29
2.8.3	Whether First in and First Out (FIFO) method has been adopted for using mdm ingredients such as pulses, oil/fats, condiments salt etc. or not.	29
2.8.4	Arrangements for safe storage of ingredients and condiments in kitchens.	29
2.8.5	Steps taken to ensure implementation of guidelines dated 13.02.2015 on food safety and hygiene in school level kitchens under mid day meal scheme.	29
2.8.6	Information regarding dissemination of the guidelines upto school level.	29
2.9	Types of Fuel used for cooking of Mid Day Meals-LPG, Smokeless Chulha, firewood etc.	29
2.9.1	Steps taken by State to increase use of LPG as mode of fuel in MDM.	29
2.9.2	Steps taken by State to provide LPGs fuel in MDM in all schools.	29
2.9.3	Expected date by which LPG would be provided in all schools.	29
2.10	Kitchen-cum-stores.	30
2.10.1	Procedure for construction of kitchen -cum-store.	30
2.10.2	Whether any standardized model of kitchen cum stores is used for construction.	30
2.10.3	Details of the construction agency and role of community in this work.	30
2.10.4	Kitchen cum stores constructed through convergence, if any	30
2.10.5	Progress of construction of kitchen-cum-stores and target for the next year.	30
2.10.6	The reasons for slow pace of construction of kitchen cum stores, if applicable.	31
2.10.7	How much interest has been earned on the unutilized central assistance lying in the bank account of the State/implementing agencies.	31
2.10.8	Details of kitchen cum stores constructed in convergence. Details of the agency engaged for the constriction of these kitchens cum stores.	31
2.11	Kitchen Devices.	31
2.11.1	Procedure of procurement of kitchen devices from funds released under the Mid Day Meal Programme.	31

2.11.2	Status of procurement of kitchen devices.	31
2.11.3	Procurement of kitchen devices through convergence or community / CSR.	31
2.11.4	Availability of eating plates in the schools. Source of procurement of eating plates.	31-32
2.12	Measures taken to rectify.	32
2.12.1	Inter- block low and uneven utilization of food grains and cooking cost.	32
2.12.2	Intra- block mismatch in utilization of food grains and cooking cost.	32
2.12.3	Mismatch of data reported through various sources (QPR,AWP&B,MIS etc)	32
2.13	Quality of food.	32
2.13.3	Testing of food sample by any recognized labs for prescribed nutrients and presence of contaminants such as microbe's e-coli. Mechanism to check the temperature of the cooked MDM.	33
2.13.4	Engagement of / recognized labs for the testing of Meals.	33
2.13.5	Details of protocol for testing of Meals, frequency of lifting and testing of samples.	33
2.13.6	Details of samples taken for testing and the results thereof.	33
2.13.7	Steps taken to ensure implementation of guidelines issued with regard to quality of food.	33-34
2.14	Involvement of NGOs/Trusts/ Temples/ Gurudwara / Jails etc.	34
2.14.1	Modalities for engagement of NGOs/Trusts / Temples /Gurudwara/Jails etc. for serving of MDM through centralized kitchen.	34
2.14.2	Whether NGOs/Trusts / Temples /Gurudwara/Jails etc. are serving meal in rural areas.	34
2.14.3	Maximum distance and time taken for delivery of food from centralized kitchen to schools.	34
2.14.4	Measures taken to ensure delivery of hot cooked meals to schools.	34
2.14.5	Responsibility of receiving cooked meals at the schools from the centralized kitchen.	34
2.14.6	Whether sealed/insulated containers are used for supply of meals to schools.	34
2.14.7	Tentative time of delivery of meals at schools from centralized kitchen.	34
2.14.8	Availability of weighing machines for weighing the cooked MDM at school level prepared at centralized kitchen.	34
2.14.9	Testing of food samples at centralized kitchens.	34
2.14.10	Whether NGOs/ Trusts / Temples /Gurudwara/Jails etc. is receiving grant from other organizations for the mid day meal. if so, details thereof.	34
2.15	Systems to ensure transparency and accountability in all aspects of programme implementation.	34
2.15.1	Display of logo, entitlement of children and other information at a prominent visible place in school.	34
2.15.2	Dissemination of information through MDM website.	35

2.15.3	Provisions for community monitoring at school level i.e. Mother Roaster, Inspection register.	35
2.15.4	Tasting of meals by community members.	36
2.15.5	Conducting Social Audit.	36
2.15.5.1	Whether Social Audit has been carried out or not	36
2.15.5.2	If no, in 2.15.5.1, reasons thereof	36
2.15.5.3	Details of action taken by the State on the findings of Social Audit.	36
2.15.5.4	Impact of social audit in the schools.	36
2.15.5.5	Action Plan for Social Audit during 2020-21.	36
2.16	Capacity building and training for different stakeholders.	37
2.16.1	Details of the training programme conducted for State level officials, SMC members, school teachers and others stakeholders.	37
2.16.2	Details about Modules used for training , Master Trainers, Venues etc.	37
2.16.3	Targets for the next year.	37
2.17	Management information System at School, Block, District and State level and its details.	38
2.17.1	Procedure followed for data entry into MDM-MIS Web portal	38-39
2.17.2	Level (State/District/Block/School) at which data entry is made	39
2.17.3	Availability of manpower for web based MIS	39
2.17.4	Mechanism for ensuring timely data entry and quality of data	39
2.17.5	Whether MIS data is being used for monitoring purpose and details thereof.	39
2.18	Automated Monitoring System (AMS) at School, Block, District and State level and its details.	39
2.18.1	Status of implementation of AMS	39-40
2.18.2	Mode of collection of data under AMS (SMA/IVRS/Mobile App/Web enabled)	40
2.18.3	Tentative unit cost for collection of data.	40
2.18.4	Mechanism for ensuring timely submission of information by schools	40
2.18.5	Whether the information under AMS is got validated.	40
2.18.6	Whether AMS data is being used for monitoring purpose and details thereof.	40
2.18.7	In case, AMS has not been rolled out, the reasons therefore may be indicated along with the time lines by which it would be rolled out.	40
2.19	Case Studies / Write up on best / innovative practices followed in the District along with some high resolution photographs of these best/ innovative practices.	41
2.20	Untoward incidents	42
2.20.1	Instances of unhygienic food served, children falling ill	42
2.20.2	Sub- standard supplies.	42
2.20.3	Diversion/ misuse of resources	42
2.20.4	Social discrimination	42
2.20.5	Action taken and safety measures adopted to avoid recurrence of such incidents. Whether Emergency Plan exists to tackle any untoward incident.	42
2.21	Status of Rastriya Bal Swasthya Karyakram (School Health	42

	Programme)	
2.21.1	Provision of micro- nutrients, de- worming medicine, Iron and Folic acid (WIFS)	42
2.21.2	Distribution of spectacles to children with refractive error.	42
2.22.3	Recording of height, weight etc.	42
2.22.4	Number of visits made by the RBSK team for the health check-up of the children.(Please ensure to upload at least two photographs of the visit of the medical team in each school on MDM-MIS portal).	42
2.22	Present monitoring structure at various levels. Strategy for establishment of monitoring cell at various levels viz. Block and District level for effective monitoring of the scheme.	43
2.23	Meetings of Steering cum Monitoring Committees at Block and District level.	43
2.23.1	Number of meeting held at various level and gist of the issues discussed in the meeting.	43
2.23.2	Action taken on the decisions taken during these meetings.	44
2.24	Frequency of meeting of District Level Committee held under the chairmanship of senior most MP of the District to monitor the scheme. Gist of the issues discussed and action taken thereon.	44
2.25	Arrangement for official inspections to MDM centers/school and percentage of schools inspected and summary of findings and remedial measures taken.	44
2.26	Details of the Contingency Plan to avoid any untoward incident. Printing of important phone numbers (eg. Primary health center, Hospital, Fire brigade etc) on the walls of school building.	44-45
2.27	Grievance Redressal Mechanism	45
2.27.1	Details regarding Grievance Redressal at all levels.	45
2.27.2	Details of complaints received i.e. Nature of complaint etc.	45
2.27.3	Time schedule for disposal of complaints.	45
2.27.4	Details of action taken on the complaints.	45
2.28	Details regarding Awareness Generation & Information, Education and Communication (IEC) activities and Media campaign, carried out at State/ district/block/school level.	46
2.29	Overall assessment of the manner in which implementation of the programme is contributing to the programme objectives and an analysis of strengths and weaknesses of the programme implementation.	46
2.30	Action plan for ensuring enrollment of all school children under Aadhar before the stipulated date.	46
2.31	Contribution by community in the form of Tithi Bhojan or any other similarly practices in the State/UT etc.	46-47
2.32	Availability of kitchen Gardens in the schools .Details of the Mechanism adopted for the setting up and maintenance of kitchen Gardens.	47

2.32.1	Status of availability of kitchen gardens in the schools. (Please furnish school wise details in the table given at Annexure- W1)	47
2.32.2	Mapping of schools with the corresponding Krishi Vigyan Kendras(KVK)	47
2.32.3	Details of the mechanisms adopted for the setting up and Maintenance of kitchen gardens.	47
2.32.4	Whether the produce of these kitchen gardens is used in MDM.	47
2.32.5	Action plan for setting up of kitchen gardens in all schools.	47
2.33	Details of action taken to operationalize the MDM Rules, 2015.	48
2.34	Details of payment of Food Security Allowances and its mechanism.	48
2.35	Cooking Competition	49
2.35.1	Whether cooking competitions have been organized at different levels in 2019-20	49
2.35.2	If yes in 2.35.1,	49
2.35.2.1	The number of participants in these competitions	49
2.35.2.2	Details of judges	49
2.35.2.3	How many participants were awarded	49
2.35.2.4	Was the awarded participants given any cash prizes	49
2.35.2.5	Whether the awarded recipes have been shared with schools	49
2.35.3	Details of action plan for year 2020-21.	49
2.36	Details of minor modifications from the existing guidelines carried out by District Level Committee chaired by the District Magistrate.	49
2.37	Any other issues and Suggestions.	49



National Programme of Mid Day Meal in Schools (MDMS) Annual Work Plan & Budget 2020-21

HIMACHAL PRADESH

1. Introduction:

1.1 Brief History

The National Programme of Nutritional Support to Primary Education {NP- NSPE}, popularly called Mid-Day-Meal Scheme was launched on 15th August, 1995 in the State with the twin objectives of :-



- ✘ ***Boosting Universalization of elementary education by increasing enrolment, retention and attendance.***
 - ✘ ***Simultaneously impacting on Nutritional status of children studying in Elementary classes.***
 - ❖ Under this scheme, un-cooked Food Grains (RICE) @ 3kg per month per student, were being distributed to the children of classes I to V, with 80 % attendance for 10 academic months of the year, in all the Government Primary Schools and EGS centers under SSA of the entire state, till May, 2003.
 - ❖ The rice based hot cooked mid day meal programme was launched / introduced in the State in a phased manner. In the first phase, all the schools of Scheduled Tribal Areas of the State were covered w.e.f. 22nd May, 2003. In the second phase, the Programme was extended to all Non-Tribal areas of the State w.e.f. 1st September, 2004 in which all the remaining Government and Government-aided primary schools were covered.
 - ❖ The Programme was further extended to Upper primary stage to cover all the students (classes VI to VIII) of all the stand alone middle schools and middle units of Government High & Senior Secondary Schools of the state w.e.f. **1st July, 2008.**
-



Rationale :-

Primary Schools & Upper Primary Schools

- ❖ In Himachal Pradesh, the Mid Day Meal Programme is being implemented in all the Government Primary, Upper Primary schools and NRBC, Madarsas & Maktabas supported under SSA and Cantonment Board Schools.

Stage	No. of schools	No. of students
Primary	10,738	2,95,772
Upper Primary	4,775	2,02,002
Total	15,513	4,97,774

- ❖ **In addition to above, the State Government proposed to cover approximately 35,000 students of nursery classes admitted in Government schools under mid day meal programme from the year 2020-21 and accordingly, it is requested that mid day meal may be provided to the above said students enrolled in nursery classes in the state (refer Table AT-27, 27-A, 33 & 33-A).**
- ❖ The programme is being implemented by the School Management Committees (SMCs) of the respective schools. The School Management Committees have been constituted in every school and authorized to decide the weekly menu to be served to the students in the school keeping in view the choice and liking of the children of the area, in order to make the meal more acceptable at local level.
- ❖ The funding pattern of Mid Day Meal Scheme to Himachal Pradesh State is 90:10 between Centre & State w.e.f 1.4.2015 onwards.
- ❖ Under this Scheme, the cooking cost approved in respect of primary stage (Classes 1-V) is @ ₹ 4.48 per child per school day for the year 2019-20, out of which ₹ 4.03 is borne by the GOI and ₹ 0.45 is being borne by the State Government.
- ❖ The Cooking Cost approved in respect of Upper primary stage (Classes VI-VIII) is @ ₹6.71 per child per school day for the year 2019-20, out of which, ₹ 6.04 is borne by GOI and remaining ₹ 0.67 is being borne by the State Government.



- ❖ The existing cost of foodgrains (Rice) is borne by the Government of India.
- ❖ Further, the GOI also reimburses the transportation cost of foodgrains (rice) from FCI depot to respective school premises at the rates prevalent under PDS system.
- ❖ Good Quality ingredients are used and fresh locally produced vegetables are preferred at school level.
- ❖ 21,532 cook-cum-helpers (MDM Workers) have been engaged under this scheme in the state.
- ❖ The honorarium of cook-cum-helpers (MDM Worker) engaged under this scheme has been enhanced to ₹ 2000 /- per month w.e.f 01.04.2019 onwards by the state Government. The honorarium is paid for ten academic months in a year. The cook-cum-helpers are engaged as per norms prescribed by the Government of India i.e. 1-25 students = one cook-cum-helper, 26-100=Two cook-cum-helpers and onwards for every addition of 100 students, one additional cook-cum-helper has been allowed to be engaged.
- ❖ In order to make the school environment, healthy and pollution free and in the interest of environmental protection, less polluting fuels have been encouraged by the state. With this objective, 15,038 (97%) schools are using LPG based fuel and each school has been asked to procure gas connection / gas stove wherever possible.
- ❖ Further, in order to ensure the monitoring of the MDM Scheme, the Steering-Cum-Monitoring Committee (SL-SMC) under the Chairmanship of Chief Secretary at State and District and Block level committees under the Chairmanship of Deputy Commissioners and SDO (civil) respectively have been constituted. Besides, School Management Committees have also been constituted at each school level.
- ❖ All the Deputy Directors (Elementary Education) in the state have been directed to make proper arrangements for green waste in the school campus under mid day meal programme.



1.1 (a) Himachal Pradesh: A FACT SHEET: Source Statistical Data

	Characteristic	Reference Year	Unit	
1	Area	2011 Census	Sq km.	55,673
2	Districts		Number	12
3	Tehsil/ Sub Tehsil			169
4	Sub Divisions			80
5	Community Blocks			78
6	Nagar Nigam			2
7	Zila Parishad			12
8	Panchyat Samiti			77
9	Nagar Panchayats			27
10	Gram Panchayats			3,226
11	Total Villages			20,690
12	Inhabited Villages			17,882 (2011 census)
13	Population		Lakhs	68,64,602
14	Males			34,81,873
15	Females			33,82,729
16	Females per 1000 males		Number	972
17	Rural Population			61,76,050(90%)
18	Urban Population			6,88,552 (10%)
19	Density of Population		Sq. km.	123 Person
20	Growth Rate of population			12.94%



21	Death Rate (SRS) per 1000		6.6
22	Birth Rate per 1000		16.3 %
23	Literacy Rate		82.80%
24	Male Literacy rate		89.53%
25	Female Literacy Rate		75.93%
26	Total Schools	15,513	
	Primary	10,738	
	Upper Primary	4,775	
27	Total Enrolment	4,97,774	
	Primary	2,95,772	
	Upper Primary	2,02,002	
28	GER		
	Primary	104.60	
	Upper Primary	98.50	
30	NER		
	Primary	88.70	
	Upper Primary	77.30	
31	PTR		
	Primary	12.66	
	Upper Primary	12.04	
32	Average School Size		
	Primary	28	
	Upper Primary	45	
32	Dropout rate		
	Primary	0.06	
	Upper Primary	0.51	

(Source UDISE Data 30-9-2017)

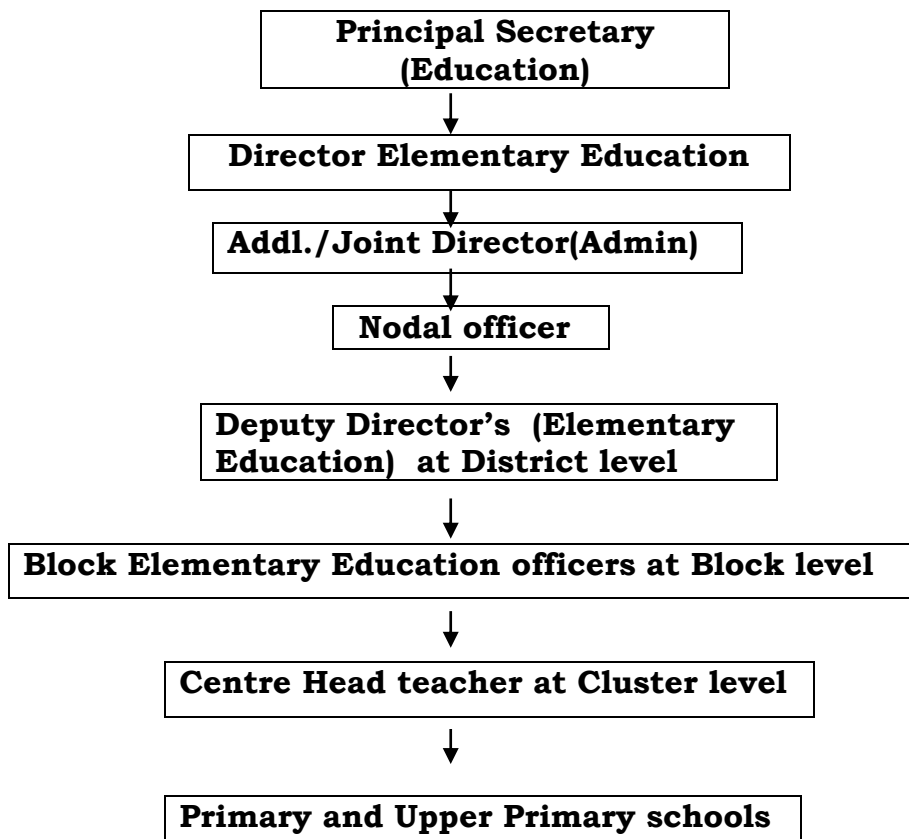


1.2 Management structure

Present Management Structure under MDMS:

The MDM scheme is being implemented by the Department of Elementary Education in the State as the Nodal Department.

- ❖ The Principal Secretary (Education), Government of Himachal Pradesh is the Administrative Head at Government level and Director Elementary Education at Department level.
- ❖ Twelve (12) Deputy Directors (Elementary Education) are the Nodal Officers at District level and 129 Block Elementary Education Officers (BEEOS) at Block level.



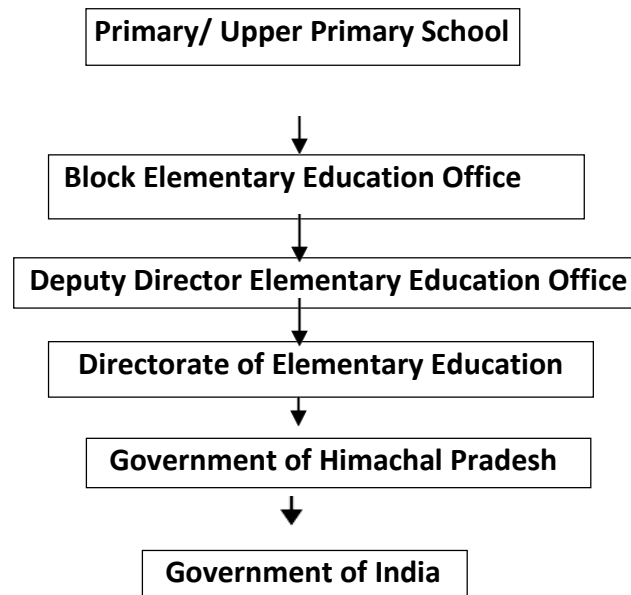


1.3 Process of Plan Formulation at State and District level.

The Mid Day Meal Programme is being implemented in the entire Primary, Stand alone Middle Schools and Middle units of High & Sr. Sec. schools NRBC, Madarsas & Maqtabas supported under SSA and Cantonment Board Schools in the State.

The flow of information for plan formulation starts from the school level. The school sends the proposal to their respective Block offices. The Block offices consolidate/scrutinize the proposal and send to their respective Deputy Directors (Elementary Education) at District level, who after compilation / scrutinizing, prepare the plan for the current financial year and forward it to Directorate of Elementary Education.

The proposal received from concerned districts are compiled / scrutinized as per norms prescribed by the Government of India and then submit it to the State Government for approval of the State level Steering-cum-Monitoring Committee (SL- SMC) constituted under the Chairmanship of Chief Secretary. After approving the plan by the SL-SMC, the State Government forwards the same to the Government of India, MHRD for consideration and approval in MDM-PAB meeting at Government of India, MHRD New Delhi.



Plan is formulated on the basis of School data

- ❖ Number of Government Primary, Upper Primary schools (Middle units of High & Sr. Sec. schools), NRBC, Madarasas & Maqtabs supported under SSA and Cantonment Board Schools.
- ❖ Enrollment.
- ❖ School Days.
- ❖ Mid Day Meal workers (Cook-cum-helpers) engaged in the schools.
- ❖ Norms prescribed by the GOI in respect of Food norms, cost of foodgrains, cooking cost, honorarium & freight rates.



2. Description and assessment of the programme implemented in the current year 2019-20 and proposal for the next year 2020-21 with reference to:

2.1 Regularity and wholesomeness of mid-day meal served to children; Interruptions if any and the reasons therefore, problem areas for regular serving of meals and action taken to avoid interruptions in future.

Calorific / Protein Value of the Mid Day Meal Provided.

- ❖ Under the MDM scheme, mid-day meal, is being served during all the school days to all the students of Primary classes(I- V) and Upper Primary classes(VI- VIII) (stand alone Middle schools and middle units of High& Sr. Secondary Schools, NRBC, Madarsas & Maqtabs supported under SSA and Cantonment Board Schools.
- ❖ The Government of Himachal Pradesh is making every effort to make the meals served more wholesome, nutritious & varied.
- ❖ The SMC of the school is empowered to decide the weekly menu to be served in the school keeping in view the choice and liking of the children of the area.

“ Table – 2- A ”

Sr. No.	Name of Ingredients.	Quantity in gram	Average calories	Average Protein Contents
1.	Rice	100 g	345	6.8
2.	Pulses	30g	108.86	7.52
	Vegetables	60g	36.00	2.70
	Potato	15g	14.6	0.24
	Soya chunks	5 g	21.6	2.16
3.	Edible oil	5.0 g	45	0
4.	Masala	2.0 g	0	0
5.	Onion	10.0 g	5.0	0.12
6.	Salt	2.5 g	0	0.00
Average Calorie and Protein Contents			485.53	13.23



B. For Upper Primary Schools

“ Table – 2- B ”

S. No.	Name of Ingredients	Quantity in gram	Average calories	Average Protein Contents
1.	Rice	150 g	517.50	10.20
2.	Pulses	40 g	145.14	11.78
	Vegetable	85 g	51.00	3.83
	Potato	20 g	19.40	0.32
	Soya chunks	13 g	56.16	5.62
3.	Edible oil	7.5 g	67.50	0
4.	Masala	2.5 g	0	0
5.	Onion	15 g	7.50	0.18
6.	Salt	4 g	0	0
Average Calorie and Protein Contents			728.35	21.15

SMCs have been authorized that ingredients used for the preparation of mid- day meal should preferably be purchased from the local farmers & market. Purchase of vegetables & other Ingredients from the local farmers & market which would not only cost less but also add fresh produce to the menu.





ESTIMATED AVERAGE PER CHILD PER DAY COOKING COST FOR PRIMARY & UPPERPRIMARY SCHOOLS FOR THE YEAR 2020-21 :-

The proposed cooking cost for the year 2020-21 in respect of primary and upper primary stages is as under:

Detail of Central and State Share for per child per school day cooking Cost

Year	Primary (Rs.)			Upper Primary (Rs.)			Remarks
	Centre	State	Total	Centre	State	Total	
2018-19	3.91	0.44	4.35	5.86	0.65	6.51	w.e.f. 01-04-2018 to 31.03.2019
2019-20	4.03	0.45	4.48	6.04	0.67	6.71	w.e.f. 01-04-2019 onwards
2020-21	4.15	0.46	4.61	6.22	0.69	6.91	Proposed rate for the year 2019-20 (@ 3% hike)

- ❖ The recommended food norms as mentioned in the table No. **AT-1** (Sr. No. 2) in respect of Primary and Upper Primary Stages will remain same.
- ❖ Cooking cost includes cost of pulses, vegetables, cooking oil, condiments and fuel etc.



2.2 System for cooking, serving and supervising mid-day meals in the schools.

2.3 Details about weekly Menu.

2.3.1 Weekly Menu – Day wise.

- School Management Committees have been authorized to decide the weekly - day wise menu keeping in view the choice and liking of the children of the area, in order to make the meal more acceptable at local level.
- The schools have also been directed to ensure that the weekly - day wise menu as approved by the School Management Committee is displayed on the Notice Board of the school and to see that the cooking / distribution of meal is strictly, as per the displayed weekly - day wise menu below ;

* साप्ताहिक मध्याह्न भोजन सूची *								
सोमवार	दाल-चावल							
मंगलवार	सब्जी-चावल							
बुधवार	दाल-चावल							
वीरवार	मीठा							
शुक्रवार	दाल-चावल							
शनिवार	सब्जी-चावल							
* प्रति छात्र राशन मात्रा सूची *								
चावल	दाल	सब्जी	नमक	भसाबा घी	प्याज	चीनी	मिठे	सोयासंकस
150ग्राम	40ग्राम	105ग्राम	4ग्राम	2.5ग्राम	1ग्राम	15ग्राम	6ग्राम	13ग्राम
100ग्राम	30ग्राम	75ग्राम	2.5ग्राम	2ग्राम	5ग्राम	10ग्राम	4ग्राम	5ग्राम



2.3.2 Additional Food items provided (fruits/milk/any other items), if any from State/UT resources. Frequency of their serving alongwith per unit cost per day.

At present additional food items are not provided under the scheme in the state. However the State Government is planning to provide additional food items i.e seasonal fruits or milk etc. once/twice in a week from the next financial year 2020-21.

2.3.3 Usage of Double Fortified Salt and Fortified Edible Oil, their availability and constraints, if any, for procuring these items.

At present double fortified salt and edible oil are not being used under Mid Day Meal Scheme due to non availability of the same in the open market in the state. However, the matter regarding availability of these food items for Mid Day Meal Scheme is being expedited with the Himachal Pradesh State Civil Supplies Corporation, so that the same could be procured by the SMC of the school for Mid day Meal Scheme.

2.3.4 At what level menu is being decided /fixed,

Menu is decided at school level by the respective School Management Committee (SMC) of the school.

2.3.5 Provision of local variation in the menu, Inclusion of locally available ingredients/items in the menu as per the liking/taste of the children.

The SMCs have been advised that the ingredients used for the preparation of Mid-Day Meal should preferably be purchased from the local farmers & market since the purchase of vegetables & other ingredients from the local farmers & market would not only cost less but also add fresh produce to the menu.

2.3.6 Time of serving meal.

Mid Day Meal is served during the recess time of the school which is different for summer and winter vacation schools in the state.



2.4 Fund Flow Mechanism - System for release of funds (Central share and State share).

2.4.1 Existing mechanism for release of funds up to school/ implementing agency levels.

Central Share:

The GOI releases its share directly to the State, for which, the required Financial /Administrative Expenditure Sanction is accorded by the State Government. Thereafter, the State Nodal Agency i.e. Department of Elementary Education, releases the budget online through e-vitran to the Drawing Disbursing officers i.e. Block Elementary Education Officers (BEEOs). The Department has given full powers to the Drawing and Disbursing Officers (BEEOs) for the purposes of Mid Day Meal Scheme. At the school level the expenditure is incurred by the School Management Committee. The state makes requisite budget provision for both the central and State share in the state budget in every financial year.

State Share:

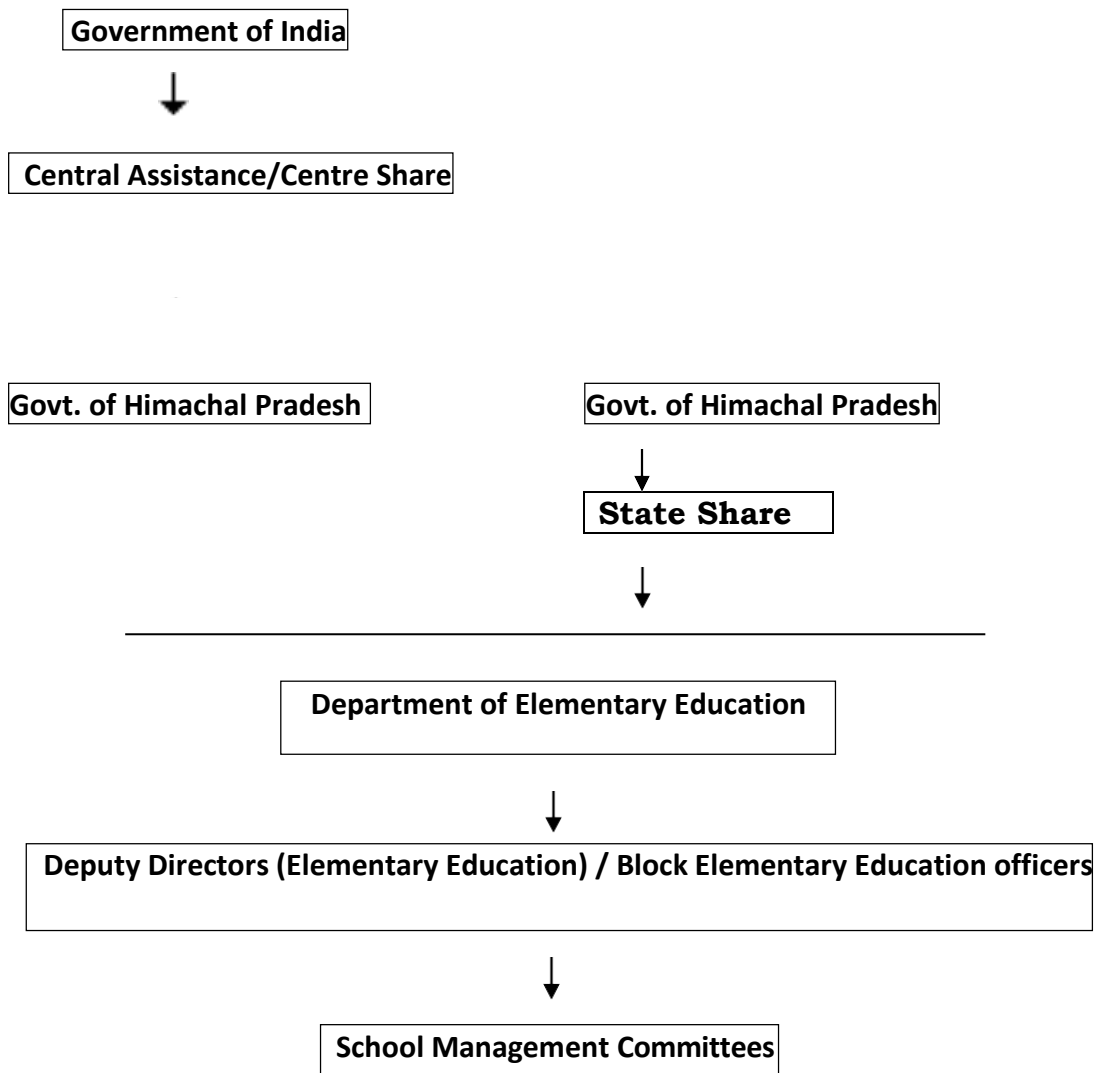
The State Government makes budget provision for the scheme in the State budget in every financial year for both central and state share and placed at the disposal of Director Elementary Education. The Director Elementary Education releases its full mandated State share to the Block Elementary Education Officers (BEEOs) in the beginning of each financial year before the receipt of Adhoc central assistance from GOI in order to implement the MDM Scheme un-interruptedly. The BEEOs further release funds to the concerned schools / SMCs. The budget is being distributed through internet (e-vitran, web application developed by the State Treasury Department) and thus the schools receive the budget within a day. This process saves time and manpower considerably. This also ensures the transparency in allocating the funds.

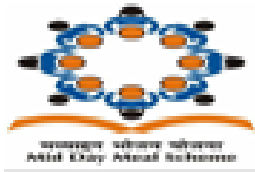


2.4.2 Mode of release of funds at different level,

FUND FLOW CHART:-

The fund flow chart to outline the process for the flow of funds (Central and State) from the Government to the ultimate implementing agencies at the school level is as under:-





2.4.3 Dates when the fund were released to State Authority / Directorate / District / Block / Gram Panchayat and finally to the Cooking Agency /School.

The date wise detail of budget distribution to the Blocks/Field Offices/ Schools is given at Table “AT-2A”.

2.4.4 Reasons for delay in release of funds at different levels.

The State Government made requisite budget provision for central share in the State budget during 2019-20, thus there is no delay in release of funds in respect of Adhoc, balance of 1st installment and 2nd installment of central assistance during 2019-20.

2.4.5 In case of delay in release of funds from State/ Districts, how the scheme has been implemented by schools/ implementing agencies.

Not Applicable.

2.4.6 Initiatives taken by the State for pre-positioning of funds with the implementing agencies in the beginning of the year, like creation of corpus funds, adoption of green channel Scheme, advance release of state share etc.

The State Government is making the requisite budget provision in every financial year in the state budget both for Central and State share under MDMS.



2.5 Foodgrains management.

2.5.1 Time lines for lifting of foodgrain from FCI Depot- District wise lifting calendar of foodgrains.

The consolidated annual demand of food-grain is projected on the basis of average number of beneficiaries of the second quarter of previous year in r/o Govt. Primary (classes I-V) and Upper Primary (classes VI-VIII) Schools, on the respective prescribed formats to GOI. Accordingly, the Government of India approves and makes the necessary allocations of foodgrain(Rice) for the next financial year, @ 100 gram per child per school day for classes I-V, and @ 150 gram per child per school day and for classes VI-VIII, on the basis of the average enrollment.

To ensure the timely lifting of foodgrains, District level officials have been directed to submit the demand for required food-grains (Rice) to the concerned Deputy Commissioners for the issuance of necessary authorization well before the first day of the month preceding the allocation quarter till the last day of the second month of the said quarter, so that the allocated foodgrain (Rice) could be lifted from the FCI godowns by the lifting agency i.e. HPSCSC within the prescribed period first day of the month preceding the allocation quarter till the last day of the second month of the said quarter.

2.5.2 System for ensuring lifting of FAQ foodgrains (Joint inspections at the time of lifting etc.).

The implementing agencies have been directed to ensure the 100% lifting of Foodgrain (Rice) allocated and to check the quality and quantity of foodgrains (rice) before lifting from PDS and also ensure that Foodgrain (rice) of at least FAQ are issued by the FCI after joint inspection by the team consisting of members from FCI and nominee from collector of the respective district.

2.5.3 Is there any incident when FAQ foodgrains was not provided by FCI. If so, the action taken by the State/District to get such foodgrain replaced with FAQ food grain. How the food grain of FAQ was provided to the implementing agencies till replacement of inferior quality of food grain from FCI was arranged.

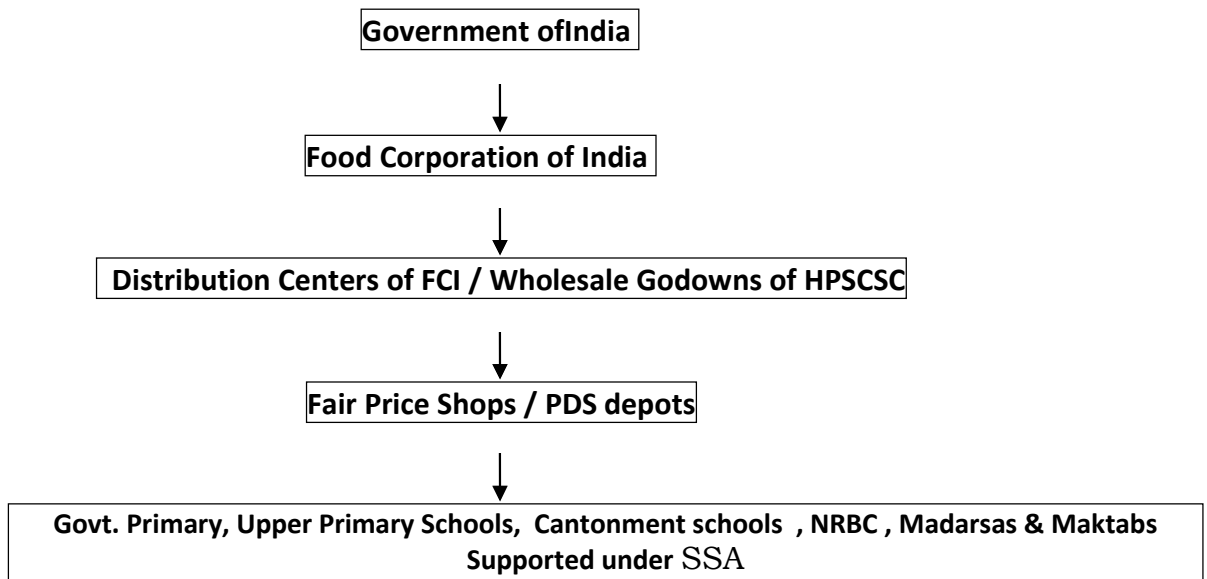
No such incidents have reported till date in the state.



2.5.4 System for transportation and distribution of foodgrains.

The GOI provides foodgrains (rice) at the FCI distribution Centre. Thereafter, the rice is lifted by the Nodal Transport Agency of the state i.e. Himachal Pradesh State Civil Supplies Corporation (HPSCSC) from FCI distribution Centers and made available at the PDS depot/ FPS, on the authorization from the respective Deputy Commissioners of concerned districts. However, the rice is lifted by the SMCs of the school from the PDS Depot /FPS for which transportation charges are paid to them and this system of lifting of rice from PDS Depot /FPS to the schools by SMC is smoothly working in the State.

❖ **Food-grains flow chart in the state is as under:-**





2.5.5 Whether unspent balance of foodgrains with the schools is adjusted from the allocation of the respective implementing agencies (Schools /SHGs/ Centralised Kitchens) Number of implementing agencies receiving foodgrains at doorstep level.

The schools raise the demand of food grains (Rice) for the next month after adjusting the unspent balance of food grains of the previous month. For this purpose a format has been designed for schools for raising the demand of food grains.

2.5.6 Storage facility at different levels in the State/District /Blocks/Implementing agencies after lifting of food grains from FCI depot.

All the schools have been provided with storage bins for storing food grains and other ingredients. The GOI has sanctioned 14,959 kitchens-cum stores. Besides, 88 kitchen-cum-stores have been sanctioned and constructed in convergence with SSA which is being used for storage facility also.

2.5.7 System of Fortification of food grains and their costing and logistics arrangements.

At present double fortified salt and edible oil are not being used under Mid Day Meal Scheme due to non availability of the same in the open market in the state. However, the matter regarding availability of these food items for Mid Day Meal Scheme is being expedited with the Himachal Pradesh State Civil Supplies Corporation, so that the same could be procured by the SMC of the school for Mid day Meal Scheme.

2.5.8 Challenges faced and plan to overcome them.

- ❖ Timely supply of foodgrains (rice) to the schools / Institutions is main challenge / hurdle in the implementation of the scheme due to tough topographic & climatic conditions of the state, hence the supply of the foodgrains (rice) from FCI distribution centers to school premises takes considerable time.



- ❖ To ensure the timely supply and maintenance of buffer stock at the school level, the requisite instructions have been issued to field/ district offices that allocation of rice be made on quarterly basis. This will considerably curtail the time taken by nodal transportation agency for lifting of rice from FCI godown and to make available at PDS depots/FPS.
- ❖ In case of any delay in lifting the foodgrains (rice), the matter is taken up with the concerned authorities immediately i.e. FCI / HPSCSC. However, the pulses and other ingredients for Mid Day Meal Programme are purchased at local level by the SMC's of the schools.

2.6 Payment of cost of foodgrains to FCI.

2.6.1 System for payment of cost of foodgrains to FCI; whether payments made at district level or State level

The Government of India vide their letter No. F.1-15/2009-Desk(MDM) dated 10.2.2010 had conveyed the guidelines regarding payment of cost of foodgrains(Rice) to the FCI. As per these guidelines, *“The foodgrains (rice) are to be supplied by the Government of India through Food Corporation of India to the state. The payment of cost of foodgrains (rice) is to be made by the State Government to the Food Corporation of India. Whereas, in previous years the payments of the cost of foodgrains (rice) were made / released by the Government of India directly to the FCI.”*

“The FCI will raise the bills pertaining to the supply of foodgrains during a month to the district administration by the 10th day of the next month in the prescribed format and the district administration will ensure payment within 20 days.”

The claims are raised by the FCI for lifted rice from FCI godowns and verified from the districts, then the payment of cost of rice is released to the FCI at State level.



2.6.2 Status of pending bills of FCI of the previous year (s) and the reasons for pendency.

No claim pertaining to the previous year i.e 2018-19 is lying pending with the State / Department. The State has cleared all bills raised by FCI upto March, 2019. An amount of ₹ 381.87 lakhs has been released to the FCI for lifting 12728.91 MTs of rice during 2018-19 under the programme.

2.6.3 Timelines for liquidating the pending bills of previous year(s).

Not Applicable.

2.6.4 Whether meetings are held regularly in the last week of the month by the District Nodal Officers with FCI as per guidelines dated 10.02.2010 to resolve the issues relating to lifting, quality of food grains and payment of bills.

All the payments of cost of food grains (rice) are released to FCI in time in the state. However, the State Nodal Officer/ officials of state Elementary Education Department coordinate with FCI officials from time to time in this regard.

2.6.5 Whether the District Nodal Officers are submitting the report of such meeting to State Head quarter by 7th of next month.

YES.

2.6.6 The process of reconciliation of payment with the concerned officers of FCI.

The reconciliation of payment of the cost of food grains (rice) with FCI is made by the District Nodal Officers at District level and State Nodal Officer at State level before the release of payment to them on monthly basis and reconciled at the end of the financial year also.

2.6.7 Relevant issues regarding payment to FCI.

No payment is pending to the FCI of the previous year.

2.6.8 Whether there is any delay in payment of cost of foodgrains to FCI. If so, the steps taken to overcome the delay.

Not Applicable.



2.7 Cook-cum-helpers

2.7.1 Whether the State follows the norms prescribed by MHRD for the engagement of cook-cum-helpers or it has its own norms.

12

2.7.2 In case, the State follows different norms, the details of norms followed may be indicated.

N.A

2.7.3 Is there any difference in the number of cook-cum-helpers eligible for engagement as per norms and the CCH actually engaged

NO

2.7.4 System and mode of payment, of honorarium to cook-cum-helpers and implementing agencies viz. NGOs / SHGs / Trust / Centralized kitchens etc.

All the cook-cum-helpers are engaged by SMC's of the concerned school. The budget for honorarium is allocated through e-vitran to the BEEO who further makes the payment of honorarium in the Bank Accounts of all the cook-cum- helpers through e- transfer (DBT).

The funds/ budget on account of honorarium to CCH are allocated to the BEEOs through e-vitran, on the basis of number of cook-cum-helper engaged in the Block.

2.7.5 Whether the CCH were paid on monthly basis.

YES, the payment of honorarium to the Cook-cum-helpers is being paid on monthly basis through e-transfer (DBT).

2.7.6 Whether there was any instance regarding irregular payment of honorarium to cook-cum-helpers and reason thereof. Measures taken to rectify the problem.

No



2.7.7 Rate of honorarium to cook-cum-helpers,

The Government of India has fixed the honorarium of cook-cum-helpers @ ₹ 1000/- per month for ten academic months in a year in the ratio of 90:10 between centre and state. However, the State Government has enhanced the honorarium of cook-cum-helper engaged under this scheme @ ₹ 1500/- per month w.e.f 17.8.2017 to 31.07.2018, @ ₹ 1800/- w.e.f 1.8.2018 to 31.03.2019 and @ ₹ 2000 /- w.e.f. from 1-04-2019 onwards .Thus GOI is sharing ₹ 900/- per month and the State is contributing ₹ 1100/- per month. The honorarium is paid for ten academic months in a year.

2.7.8 Number of cook-cum-helpers having Bank Accounts,

All the 21,532(100%) cook cum helpers have Bank Accounts.

2.7.9 Number of cook-cum-helpers receiving honorarium through their Bank Accounts,

All the 21,532 (100%) cook-cum- helpers having Bank Accounts and are being paid honorarium through e-transfer(DBT).

2.7.10 Provisions for health check-ups of Cook-cum-Helpers.

The quality & hygiene in the preparation & serving of meals, to the students, is continuously invoking concern from various quarters in the State. The preparation& serving of meals is a sensitive and continuous process, so it is necessary that the cook-cum-helpers engaged under this scheme should be physically and medically fit. He / She should not suffer from any contagious disease. Hence, the health check up of all cook-cum-helpers has been made mandatory at initial appointment and thereafter on half yearly basis after the appointment.

2.7.11 Whether cook-cum-helpers are wearing head gears and gloves at the time of cooking of meals.

All the cook cum helpers cover their head with cloth as it is a tradition in the state of Himachal Pradesh commonly called “DHATU”



2020/2/19 12:39



2.7.12 Modalities for apportionment of cook-cum-helpers engaged at school level and working at centralized kitchens, in case of schools being served through centralized kitchens,

The State has framed guidelines/ norms for engaging the cook-cum-helpers under MDM Scheme. The persons belonging to BPL/Low income group family, widow or deserted/ destitute women, belonging to SC/ST/OBC/ minority category and families without any member in Government service and also from the concerned village/gram panchayat are preferred.

2.7.13 Mechanisms adopted for training of cook cum helpers. Total number of trained cook cum helpers engaged in the cooking of MDMS. Details of the training modules; Number of Master Trainers available in the State; Number of training organized by the Master Trainers for training cook- cum-helpers.

The State has trained 112 Cook-cum-helpers from the Institute of Hotel Management, Kufri as master trainers. They are further imparting training to their fellow other Cook- cum- helpers in their respective Blocks/schools.





2.7.12 Whether any steps have been taken to enroll cook-cum-helpers under any social security schemes i.e Pradhan Mantri Jan Dhan Yojana, Pradhan Mantri Suraksha Bima Yojana, Pradhan Mantri Jeevan Jyoti Bima Yojana etc. and number of cooks benefited through the same.

YES.

2.8 Procurement and storage of cooking ingredients and condiments

2.8.1 System for procuring good quality pulses, vegetables including leafy ones, salt, condiments, oil etc. and other commodities.

Foodgrains (rice) are made available by the Government of India through Food Corporation of India for which funds are provided to the State by the Government of India. The state has authorized the School Management Committees (SMC) to procure good quality pulses, vegetables including leafy ones, double fortified salt, condiments, oil etc .The cooking ingredients are purchased / purchased by the SMCs at the school level from local farmers/market. However, no commodity is being procured/ purchased centrally for Mid Day Meal Scheme in the State.



2.8.2 Whether pulses are being procured from NAFED or otherwise.

No

2.8.3 Whether First In and First out (FIFO) method has been adopted for using MDM ingredients such as pulses, oil/fats. Condiments salt etc. or not.

It is a general practice that articles/ commodities procured/purchased are consumed on first in first out (FIFO) basis and the same is being implemented in the State.

2.8.4 Arrangements for safe storage of ingredients and condiments in kitchens.

The schools have been provided with storage bins for storing of food grains and other ingredients which are kept in hygienic manner in kitchen-cum stores constructed under the MDMS.



2.8.5 Steps taken to ensure implementation of guidelines dated 13.02.2015 on food safety and hygiene in school level kitchens under Mid Day Meal Scheme.



The guidelines of Government of India, MHRD dated 13.02.2015 on food safety and hygiene in school level kitchens under Mid Day Meal Scheme have been circulated to all the implementing agencies/ schools and are being followed & implemented in letter and spirit.

2.8.6 Information regarding dissemination of the guidelines up to school level.

All the guidelines of Government of India, MHRD in respect of Mid Day Meal Scheme have been circulated to all the institutions/ schools for implementation. However, the updated/ revised guidelines are circulated from time to time and uploaded on the website of the Department.

2.9 Type of Fuel used for cooking of Mid Day Meals –LPG, smokeless chulha, firewood.

2.9.1 Number of schools using LPG for cooking MDM.

2.9.2 Steps taken by State to provide LPG as fuel in MDM in all schools.

2.9.3 Expected date by which LPG would be provided in all schools.

In order to make the school environment, healthy and pollution free and in the interest of environmental protection, less polluting fuels are being used by the state. With this objective, 15,038 (97%) schools are using LPG based fuel and the remaining schools have been asked to procure gas connection/gas stove wherever possible for which funds have been provided to the schools.





2.10 Kitchen-cum-stores.

2.10.1 Procedure for construction of kitchen-cum-store,

The GOI, MHRD has sanctioned 14,959 kitchen-cum- Stores upto 2015-16 to H.P. state. Besides, 88 kitchen-cum- Stores have been constructed with convergence of SSA. The work of construction of kitchen -cum- Stores has been assigned to the civil wing of SSA. Out of 14,959 sanctioned kitchen -cum-stores, 14852 has been constructed, 46 are in progress and 61 have not been started due to non availability of land since these schools are running in rented or rent-free accommodation provided by the local community and separate room is being used as kitchen -cum- Stores in the available accommodation of the schools for mid day meal programme in such schools. However, efforts are being made to complete the left out construction of kitchen-cum-Stores in 61 not started units on priority.

2.10.2 Whether any standardized model of kitchen cum stores is used for construction.

Yes, the design approved by the Government of India, MHRD is being followed and used for the construction of kitchen-cum-stores in the state.

2.10.3 Details of the construction agency and role of community in this work.

The civil wing of SSA has been assigned the construction work of kitchen cum stores who is executing the work through SMCs of the school.

2.10.4 Kitchen cum stores constructed through convergence, if any.

88 kitchen cum stores have been constructed through convergence with SSA.



2.10.5 Progress of construction of kitchen-cum-stores and target for the next year.

The Progress already stated above at point No. 2.10.1, However, there is no proposal/target for the year 2020-21.

2.10.6 The reasons for slow pace of construction of kitchen cum stores, if applicable.

N.A

2.10.7 How much interest has been earned on the unutilized central assistance lying in the Bank Account of the State/implementing agencies.

N.A.

2.10.8 Details of the kitchen- cum-stores constructed in convergence. Details of the agency engaged for the construction of these kitchens-cum-stores.

Status already mentioned at AT- 11 and AT-11-A.

2.11 Kitchen Devices.

2.11.1 Procedure of procurement of kitchen devices from funds released under the Mid Day Meal Programme.

As per the instructions issued by the Government of India, MHRD, the School Management Committees have been authorized to purchase the kitchen devices as per the requirement of the concerned school in a decentralized manner after observing and completing all administrative codal formalities.

2.11.2 Status of procurement of kitchen devices.



Status mentioned at AT- 12 and AT-12-A .

As per the instructions issued by the Government of India the School Management Committees have been authorized to purchase the kitchen devices as per the requirement of the concerned schools.



2.11.3 Procurement of kitchen devices through convergence or community/CSR.

Nil.

2.11.4 Availability of eating plates in the schools. Source of procurement of eating plates.

The eating plates are being provided to all the school in a phased manner and the procurement/purchase of eating plates are being made in a decentralized manner through SMC's of the concerned schools.



2.12 Measures taken to rectify.

2.12.1 Inter-district uneven utilization of foodgrains and cooking cost.

2.12.2 Intra-district mismatch in utilization of food grains and cooking cost.

2.12.3 Mismatch of data reported through various sources (QPR, AWP&B, MIS etc.)

- ❖ Sometimes minor delay in releasing the cooking cost leads to uneven utilization of cooking cost as compared to foodgrains.
- ❖ As the GOI release Component wise funds i.e in General, Schedule Caste (SC) and Schedule Tribe (ST) components which takes considerable time to complete the procedural formalities with the state Government at different levels.
- ❖ In order to reduce the delay in release the cooking cost to schools, the state Government made budget provision in the State budget for central as well as state share in every financial year.
- ❖ The State and Department distribute the funds directly to the Blocks and thereafter the Block Elementary Education Officers (BEEO's) further distribute the budget / funds to SMC's / Schools as per the norms. The budget is distributed through e-vitran (online), the web based application, from Directorate to concerned Block offices. Since the budget is distributed online to the Block offices, there is no delay in releasing the funds to the BEEO'S and schools.

2.13 Quality of food.

2.13.1 System of Tasting of food by teachers/community. Maintenance of tasting register at school level.



The meals are tasted by the MDM teacher Incharges / mothers/cook-cum- helpers and SMC members and accordingly instructions have been issued to all schools to maintain record of tasting of meals in MDM register at all school level.

2.13.2 Maintenance of roster of parents, community for the presence of at least two parents in the school on each day at the time of serving and tasting of mid day meal.

The SMCs have been instructed to prepare roster of mother's so that one of the mother could be present in the school on every school working day and supervise the preparation, tasting and serving of meal process. They are also assigned to keep a check on the quantity as well as the quality of meal prepared & served to to the students.

2.13.3 Testing of food sample by any recognized labs for prescribed nutrient and presence of contaminants such as microbe's e-coli. Mechanism to check the temperature of the cooked MDM.

Food samples from 10 schools (5 samples for Primary Schools and 5 samples from upper primary schools) in the year 2014-15 from district Solan, 10 schools (5 samples for Primary Schools and 5 samples from upper primary schools) tested the year 2017-18 from District Una and 10 schools (5 samples for Primary Schools and 5 samples from upper primary schools) from district Sirmour in the year 2019-20 got tested from NABL Punjab Biotechnology Incubator Mohali Punjab. The test reports of the years 2014-15 & 2017-18 furnished by the above said Laboratory found conforming to the prescribed norms which have already been shared with the GOI through state Government. However, the test reports of the year 2019-20 are awaited from the said laboratory and the same will be shared with the GOI on the receipt of the same.

2.13.4 Engagement of /recognized labs for the testing of Meals.

Since there is no NABL labs for testing the Cooked meal in the state of



Himachal Pradesh, Hence NABL Punjab Biotechnology Incubator Mohali Punjab has been identified by the GOI, MHRD for the said purpose which is nearest to the Himachal Pradesh State.

2.13.5 Details of protocol for testing of Meals, frequency of lifting and testing of samples.

&

2.13.6 Details of samples taken for testing and the results thereof.

Already stated above at point No. 2.13.3 above.

2.13.7 Steps taken to ensure implementation of guidelines issued with regard to quality of food.

Requisite instructions have been issued to all the implementing agencies in this regard.

2.14 Involvement of NGOs /Trusts/Temples/ Gurudwara/Jails etc.

2.14.1 Modalities for engagement of NGOs/ Trusts/Temples/ Gurudwara/Jails etc. for serving of MDM through centralized kitchen.

2.14.2 Whether NGOs/ Trusts /Temples/ Gurudwara/Jails etc. are serving meal in rural areas.

2.14.3 Maximum distance and time taken for delivery of food from centralized kitchen to schools.

2.14.4 Measures taken to ensure delivery of hot cooked meals to schools.

2.14.5 Responsibility of receiving cooked meals at the schools from



the centralized kitchen.

2.14.6 Whether sealed/insulated containers are used for supply of meals to schools.

2.14.7 Tentative time of delivery of meals at schools from centralized kitchen.

2.14.8 Availability of weighing machines for weighing the cooked MDM at school level prepared at centralized kitchen.

2.14.9 Testing of food samples at centralized kitchens.

2.14.10 Whether NGO / Trust / Temples/ Gurudwara / Jails etc. is receiving grant from other organizations for the mid day meal. If so, the details there of.

The Mid Day Meal Scheme is being implemented through School Management Committees(SMC's) in all schools in the State, hence no NGO/Trust/Temples /Gurudwara /Jails/ Community Based Organization (CBOs)/ PRI's as well as centralized kitchens are involved in the implementation of the Mid Day Meal Scheme in the State.

2.15 Systems to ensure transparency and accountability in all aspects of programme implementation.

2.15.1 Display of logo, entitlement of children and other information at a prominent visible place in school.

Logo of MDM scheme, food norms, cooking cost, weekly menu and toll free number are displayed at visible place in the school.



2.15.2 Dissemination of information through MDM website.

All types of information and instructions are posted on MDM website of the Department regularly.

2.15.3 Provisions for community monitoring at school level i.e. Mother Roster, Inspection Register.

- ▶ The School Management Committees (SMC's) have been constituted in every School. The parents of the students and teachers of the school are its members. The SMC's is responsible for the overall implementation of the programme at school level for ensuring the transparency and accountability at School Level, especially w.r.t. quality of meals, food-grains and cash.
- ▶ School Management Committees (SMC's) have been authorized to purchase the cooking ingredient at the school level.
- ▶ The School Management Committee (SMC) is empowered to decide the weekly menu keeping in view the liking of the students.
- ▶ The State with a view to ensure transparency and openness in all aspects



of the implementation of programme is encouraging the participation of SMC's / mothers.

- ▶ The SMCs have been instructed to prepare roster of mothers so that one of the mother could be present in the school on every school working day and supervise the preparation and serving of meal process. They are also assigned to keep a check on the quantity as well as the quality of meal prepared and served to the students.
- ▶ The funds released to the SMCs for the procurement / purchase of cooking devices hence, the SMC's procure / purchases cooking devices as per the norms as well as the requirement of the school.

2.15.4 Tasting of meals by community members.

The instructions have been issued to school level implementing agencies that one parent and preferably two who may or may not be SMC member should be present during serving of meals to the students, so that they can taste the food before serving to the students and record their statements in the MDM register. For this purpose, a roster of such parents drawn up in advance on a monthly basis and a register to record their observations also maintained at the school level.

2.15.5 Conducting Social Audit.

2.15.5.1 Whether Social Audit has been carried out or not

2.15.5.2 If no, in 2.15.5.1, reason thereof.

2.15.5.3 Details of action taken by the State on the findings of Social Audit.

2.15.5.4 Impact of Social Audit in the schools.



2.15.5.5 Action plan for Social Audit during 2020-21.

The Social Audit of mid day meal scheme of each school is being done through Gram Sabha in the state has been initiated in the state. The detailed instructions have been issued to the implementing agencies for social audit of Mid Day Meal Programme in respect of each school in the Gram Sabha meetings of the respective gram panchayats on quarterly basis as per the guidelines framed by the Government of India MHRD, Department of School Education and Literacy New Delhi. They have been directed that the Centre Head Teachers (CHT's), Head Teachers /Incharge Teachers of the school will also attend all the gram sabha meetings of the respective gram panchayats for conducting the social audit of Mid Day Meal Programme in respect of their all schools i.e. GPS, GMS and GSSS as the case may be. During the course of social audit of Mid Day Meal Programme in Gram Sabha meetings, the shortcomings observed and found may be rectified and improved as per the norms and guidelines of Mid Day Meal Programme in a time bound manner under intimation to all the quarters concerned. The district wise detail in this regard is given at AT10B.**However, in addition to above the State Government has also assigned the task of conducting social audit of mid day meal scheme to four Private recognized universities in the State. However the reports in this regard are awaited from these universities.**

2.16 Capacity building and training for different stake holders.

2.16.1 Details of the training programme conducted for State level officials, SMC members, school teachers and others stakeholders.

District level officials have also been imparted training regarding MIS, SMS and preparation of Annual Work Plan and Budget (AWP&B) of Mid Day Meal Scheme. **27** cook cum helpers during the year **2014-15**, 30 cook-cum helpers during the year 2015-16, 22 cook - cum - helpers during the year **2017-18**, and 33 cook-cum- helpers during 2019-20 have been imparted 10 days training as master trainers in the **Hotel Management Institute Kufri Shimla HP**. The Department has also



imparted training to cook- cum-helpers at cluster level regarding maintenance of cleanliness, hygiene and proper cooking procedures.

2.16.2 Details about Modules used for training, Master Trainers, Venues etc.

&

2.16.3 Targets for the next year.

The master trainers already trained in the **Hotel Management Institute Kufri Shimla HP** during the years 2014-15, 2015-16, 2017-18 & 2019-20 are further trained their fellow Cook- cum- helpers at cluster/ Centre level in their respective Blocks. In addition to this the State is planning for one day training to all the cook - cum - helpers under FSSAI during 2020-21.

2.17 Management Information System at School, Block, District and State level and its details.

2.17.1 Procedure followed for data entry into MDM-MIS Web portal

The school level format is filled by the school for making data entry in the MIS- MDM web portal which is submitted to the Block Elementary Education Officers after verification by Center Head Teacher. Presently, the Management Information System MIS-MDMS is maintained at Block level by the existing ministerial staff of Blocks / at school level by the Center Head Teacher.

In order to streamline the flow of information in the state at different levels the state has taken following steps:-

- ▶ The Head Teacher OR the Senior Teacher of the concerned school submits the Quarterly Feedback Reports / Accounts Statements to the Block Elementary Education Officer, who further compiles and submits the consolidated report of his Block to their respective Deputy Directors (Elementary Education) and who further consolidates these reports of the entire district and submits the consolidated reports of his District to the



Directorate of Elementary Education. The Directorate further consolidates, the information of entire state and submits reports to the State as well as to the Government of India accordingly.

- ▶ The Department has developed an exclusive website for MDM scheme where all type of information in respect of the scheme is uploaded on day to day basis.

2.17.2 Level (State/ District/ Block/ School) at which data entry is made.

2.17.3 Availability of manpower for web based MIS

Structure of Manpower for Web Based MIS deployed on outsource basis.

1.	State Project Coordinator	=01
2.	District Coordinators	=11
3.	Data Entry Operators	=12
	Total	=24

2.17.4 Mechanism for ensuring timely data entry and quality of data

Already mentioned above at point No. 2.17.1.

2.17.5 Whether MIS data is being used for monitoring purpose and details thereof.

YES

2.18 Automated Monitoring System (AMS) at School, Block, District and State level and its details.

2.18.1 Status of implementation of AMS.

The state has registered mobile numbers of 30,000 respondent teachers from 15000+ schools on MDM web portal designed and developed by NIC HP for SMS based mobile application for Automated Reporting and Management System (AMS) of MDMS in all school working days.

At present, 88% schools are reporting meals information on real time



through this mobile application and the same are being pushed on National Portal every day. However, due to the tough and remote as well as / tribal geographical situation of the State and in view of poor signals and non-connectivity in some locations/ parts of the state , the schools are facing problem in reporting MDM daily SMS from schools of such areas. The State is doing its earnest efforts to increase the percentage of reporting upto maximum level through this system with the help of NIC HP.

Structure of Manpower for AMS deployed on outsource basis on contract.

1. State Project Manager

=01

2. Assistant Project Manager

=02

Total

=03

2.18.2 Mode of collection of data under AMS (SMS/IVRS/Mobile App/Web enabled)

Mobile based SMS Application

2.18.3 Tentative unit cost for collection of data.

Tentative unit cost has been calculated @ Rs.0.032 per SMS by NIC HP.

2.18.4 Mechanism for ensuring timely submission of information by schools.

The respondent teachers report the information regarding meals served on every school working days through SMS on Toll Free No “15544” from their registered mobile phone numbers after serving the meals to the students.

2.18.5 Whether the information under AMS is got validated.

YES

2.18.6 Whether AMS data is being used for monitoring purpose and details thereof.



YES

2.18.7 In case, AMS has not been rolled out, the reasons there of may be indicated along with the time lines by which it would be rolled out.

Not Applicable

2.19 Details of Evaluation studies conducted by States/UT and summary of its findings.

The State Government has assigned the task of conducting third party Evaluation Studies of Mid Day Meal Scheme being implemented in the state to four private recognized universities during September, 2018. However, the reports/ findings from all the universities are awaited. As soon as the requisite reports/ findings are received the same will be shared with the Government of India, MHRD through State Government and corrective measures so recommended in the reports/ findings will accordingly be taken by the State.

2.19 Case Studies/ Write up on best/ innovative practices followed in the State alongwith some high resolution photographs of these best/innovative practices.

- ❖ The State has adopted the rice based hot cooked Mid Day Meal which is prepared fresh every day in the school kitchens on each school working day.
- ❖ The School Management Committees (SMC) have been constituted in all schools in the state and the SMC's is responsible for the overall implementation of the programme at school level, therefore teachers are least involved.
- ❖ The School Management Committees (SMC) have been authorized to purchase the cooking ingredients at school level.



- ❖ The School Management Committees (SMC) are empowered to engage /disengage the cook-cum-helpers as per the approved guidelines issued for engagement of cook-cum-helper.
- ❖ The School Management Committees (SMC) are empowered to decide the weekly menu keeping in view of the liking of the students at local level.
- ❖ The weekly menu is displayed in the schools.
- ❖ To make the public aware regarding the scheme food norms and cooking cost norms have been displayed in the school premises.
- ❖ Funds are transferred to the implementing agencies through e-transfer.
- ❖ 21,532 Cook-cum-helpers have been engaged out of which 82% are female and maximum of them are mothers of the students.
- ❖ Health screening/checkup of cook-cum-helpers made mandatory twice in a year.
- ❖ The Cook-cum-Helpers are being imparted training as master trainer (regarding maintenance of cleanliness, hygiene and proper cooking procedures in the Hotel Management Kufri Shimla in phased manner and they are further trained their fellow cook cum helpers in their respective Block/Clusters.
- ❖ The cook cum helpers cover their head with cloth as it is a tradition in the state of Himachal Pradesh.
- ❖ The state has started Mobile SMS based Mobile App for Automated Reporting and Management System (AMS) w.e.f August 2016 and approx 88% are sending message on toll free No. 15544.
- ❖ The State Government is providing Rs.1000/- extra honorarium per month to the Cook-cum-Helpers from state resources in addition to its mandated per month state share.

2.21 Untoward incidents.



2.21.1 Instances of unhygienic food served, children falling ill.

No such cases have been reported in the previous year.

2.21.2 Sub-standard supplies,

No substandard supplies of foodgrains have been reported as yet in the State.

2.21.3 Diversion/ misuse of resources.

No diversion/ misuse of resources have been made.

2.21.4 Social discrimination

One incident of social discrimination with the students occurred under Mid Day Meal in district Mandi during the year 2019. FIR has been registered against the defaulters and the matter is being investigated. Apart from this the Head Teacher of the concerned school has also been suspended and detailed enquiry is also conducted by the Department and further action will be taken on the basis of the outcome of the inquiry report & police investigation. However, the Department also issued requisite instructions to this effect from time to time to all schools to avoid the occurrence of such incidents under Mid Day Meal Scheme.

2.21.5 Action taken and safety measures adopted to avoid recurrence of such incidents. Whether Emergency Plan exists to tackle any untoward incident.

Child Help line No. "1098", Gudiya Help line No "1515", Mukhya Mantri Seva Sanklap Helpline No. "1100" (7:00 AM to 11:00PM) are operational in the State any one, any time can take help / registered their grievances /complaints on these numbers. Apart from above Free Ambulance services facility is also in place in the state with toll free No. "108" irrespective of time, day and place. In addition to above in order to tackle the law and order situation any one can dial Toll



Free No. “100” and for Fire Department it is “101”. However, all schools have been instructed to paint these numbers also on the wall in the premises of the school for awareness.

2.22 Status of Rashtriya Bal Swasthya Karyakram.

2.22.1 Provision of micro- nutrients, de-worming medicine, Iron and Folic acid (WIFS)

2.22.2 Distribution of spectacles to children with refractive error.

2.22.3 Recording of height, weight etc.

2.22.4 Number of visits made by the RBSK team for the health check- up of the children (please ensure to upload atleast 2 photographs of the visit of the Medical team in each school on MDM-MIS portal).





Rashtriya Bal Swasthya Karyakram (School Health programme) is being implemented by the Health and Family Welfare Department and the detail of the coverage of schools and students under School Health programme is attached at Table 'AT-17'

2.23 Present monitoring structure at various levels. Strategy for establishment of monitoring cell at various levels viz. Block,



District and State level for effective monitoring of the scheme.

Presently, the scheme is being monitored by the officers of the Department. The scheme is being monitored regularly in the monthly meetings held at District and State level. To strengthen the monitoring system, State has sanctioned 30 personnel on outsource basis, the detail of which are as under:

State Project Coordinator	= 1(At State HQ)
District Coordinators	=12(State HQ-1 District 11)
Data Entry Operators	=13(State HQ-1 District-12)
Total	=26

Structure of Manpower for AMS sanctioned on outsource basis

1. State Project Manager	=01
2. Assistant Project Managers	=02
Total	=03

2.24 Meetings of Steering cum Monitoring Committees at the Block, District and State level.

2.24.1 Number of meetings held at various level and gist of the issues discussed in the meeting.

The State level Steering-cum- Monitoring Committees (SL-SMC) are held under the Chairmanship of Chief Secretary to the Government of HP from time to time as per GOI, MHRD mandate. However, District and Block level Committee meetings are held in some Districts / Blocks the State.

However, in order to convene these meetings regularly the Chief Secretary has recently issued a DO letters to all the Deputy Commissioners to monitoring the MDMS in the State.2.24.2 Action taken on the decisions taken during these meetings.



The desired action taken on the decisions taken in the State level SL-SMC and District and Block level meetings are taken on priority.

2.25 Frequency of meeting of District Level Committee held under the Chairmanship of senior most MP of the District to monitor the scheme. Gist of the issues discussed and action taken there on.

Already stated above at point No. 2.24.1

2.26 Arrangement for official inspections to MDM centers /schools and percentage of schools inspected and summary of findings and remedial measures taken.

Following inspection targets have been assigned to the officers of the Education Department at different levels in a year:-

Sr. No	Name of inspecting officer	Area of Inspection	Minimum Number of inspections to be conducted in a month	
			Formal inspections	Surprise inspections
1	Deputy Director, Elementary Education	(a) Offices of Block Elementary Education Officers in the District	2	2
		(b) Govt. Elementary Schools of the District	2	2
2	Block Elementary Education Officer	Govt. Elementary Schools of the Block	4	4
3.	Center Head Teacher	Govt. Elementary Schools attached with his center	50% of the schools of center	All schools of Center
<p><i>Note 1. The officers at Sr. No. 1 & 2 above will inspect those blocks/schools which have not been inspected during the previous year.</i></p> <p><i>Note 2. On the findings of the of the Inspecting Officers, remedial action is taken by the next level officer.</i></p>				



The District Coordinators have also been assigned the job of monitoring and inspection at district level.

2.27 Details of the Contingency Plan to avoid any untoward incident. Printing of important phone numbers (e. g. Primary health centre, Hospital, Fire Brigade etc) on the walls of school building.

Already stated above at point No. 2.21.5

2.28 Grievance Redressal Mechanism

2.28.1 Details regarding Grievance Redressal at all levels.

2.28.2 Details of complaints received i.e. Nature of complaints etc.

2.28.3 Time schedule for disposal of complaints.

2.28.4 Details of action taken on the complaints.

The State has established the Grievance Redressal Mechanism under MID DAY MEAL SCHEME at State, District, Block and School level and following officers have been appointed as nodal officers at these levels :-

State Level	:	Additional/Joint Director(Admn)/Nodal Officer(MDM)
District Level	:	Deputy Directors (Elementary Education)
Block Level	:	Block Elementary Education Officers
School Level	:	Centre Head Teachers

The State/ District Nodal officers sends the complaints received in respect of District / Block /School to the concerned Nodal officers immediately and the concerned Nodal Officer at their respective levels address the complaints accordingly on priority.

Further, the State has also installed the TOLL FREE NUMBER (1800-180-8007) at Directorate level. The complaints / grievance received on every working day between 10.10 AM to 5.00 PM. In this regard 9 miscellaneous complaints received during 1-4-2019 to 31-12-2019 and all have been resolved. In addition to the above, queries regarding MDM AMS portal, MIS



portal and Supreme Court Evaluation form received on the above said Toll Free No. or through e-mail which were also resolved. Apart from above, there are State Government application software's portal i.e. “E-Samadhan” and “CM Seva Sankalp Help line” on which any one can register his/ her grievances. The Department also receive the grievances of the public through post.

2.29 Details regarding Awareness Generation &Information, Education and Communication (IEC) activities and Media campaign, carried out at State/district/block/school level.

To give the wider publicity of the scheme, Toll Free No “1800-180-8007” has been installed and also the information pertaining to the scheme is posted on the website of the MDM scheme at state level.

2.30 Overall assessment of the manner in which implementation of the programme is contributing to the programme objectives and an analysis of strengths and weaknesses of the programme implementation.

The overall assessment of the programme implementation in the state is as under:-

- ❖ The programme is being implemented smoothly, uninterrupted and regularly in the state without receiving any serious complaint or interruption and this scheme is helping the state in achieving the targeted objectives.
- ❖ Under this scheme, rice based nutritious Hot cooked meal prepared fresh daily on all school working days and served to all the students in schools. The menu of the meal is allowed to be varied at the school level decided by the School Management Committees keeping in view the liking of the students of the area. This scheme also helped the malnourished students of poor families in improving their nutritional status and also helped in inculcating good habits among them.
- ❖ Problems are being faced in the schools with enrollment less than 10 where the cooking cost is quite insufficient to meet the expenses.



2.31 Action Plan for ensuring enrolment of all school children under Adhaar before the stipulated date.

Status attached at AT- 4B

2.32 Contribution by community in the form of “Tithi Bhojan” or any other similar practices in the State/ UT etc.

“Tithi Bhojan” type of functions are already celebrated in the schools voluntarily by the community members such as child births, marriages, birthdays, success exams, anniversaries festivals in the family or in the larger community. However, instructions have been issued to all the field functionaries to encourage “Tithi Bhojan” type of functions in schools. However, the nomenclature of this tradition is popularly called as **“DHAM”** in the State.

2.33 Kitchen gardens.

2.33.1 Status of availability of kitchen gardens in the school. (Please furnish school wise details for all districts in the table given at Annexure- W 1.)

2.33.2 Mapping of schools with the corresponding Krishi Vigyan Kendras (KVK).

2.33.3 Detail of the Mechanism adopted for the setting up and Maintenance of Kitchen gardens.

2.33.4 Whether the produce of these kitchen gardens is used in MDM.

2.33.5 Action plan for setting up of kitchen gardens in all schools.

Kitchen gardens are being developed in all schools in phased manner with the help of the School Management Committees of the respective schools and the produce of these Kitchen gardens (wherever set up till date) is being used in mid day meal.



Status attached at AT-10E



2.34 Details of action taken to operationalize the MDM Rules, 2015.

The state has adopted the MDM Rules 2015 framed by the GOI MHRD, and circulated to all the field functionaries and schools for its implementation in letter and spirit.

2.35 Details of payment of Food Security Allowances and its mechanism.



No such type of cases reported so far in the state.

2.36 Cooking Competition

2.36.1 Whether cooking competitions have been organized at different levels. in 2019-20, if yes in 2.36.1,

2.36.2.1 The number of participants in these competitions

2.36.2.2 Details of judges.

2.36.2.3 How many participants were awarded.

2.36.2.4 Was the awarded participants given any cash prizes

2.36.2.5 Whether the awarded recipes have been shared with schools

Not conducted during 2019-20.

2.36.3 Details of action plan for year 2020-21

Steps will be taken to conduct cooking competitions during 2020-21.

2.37 Details of minor modifications from the existing guidelines carried out by District Level Committee Chaired by the District Magistrate.

Nil

2.38 Details of new interventions (preferably for areas affected with malnutrition, anemia etc, aspirational districts) envisaged under 5% flexi funds-For each intervention, please provide detailed information in the below template.

2.38.1 Background Note

2.38.2 Objectives

2.38.3 Rationale for the intervention



2.38.4 Time lines

2.38.5 Coverage

2.38.5.1 Number of Districts

2.38.5.2 Number of Schools

2.38.5.3 Number of Children

2.38.5.4 Number of working days

2.38.6 Requirement of funds

2.38.7 Monitoring

2.38.8 Outcome measurement

2.38.9 Impact assessment

Nil

2.39 Any other issues and Suggestions

- ❖ To cover 35,000 students of Pre- Primary classes studying in Government Schools.
- ❖ Enhancement in the honorarium of Cook-Cum –Helpers (CCH) Centre Share.
- ❖ The Hon'ble High Court of Himachal Pradesh order dated__ in CWP___ regarding payment of Honorarium to Cook-cum-Helpers for 12 months instead of 10 months.
- ❖ Enhancement in per day per child Cooking Cost.



Annexure - II

Information on Costing r/o Pre Primary, Primary & Upper Primary stage, for the year 2020-21				
Sr. No.	Item	Primary (class I to V)	Upper primary (class VI to VIII)	Total
1	Number of Institutions	10738	4775	15513
2	Enrollment as on 30.9.2019	295772	202002	497774
3	Enrolment for calculate plan	307885	187696	495581
4	Total No. of school Days in the year 2020-21	242	242	242
5	Per Child per day Average Cooking / Conversion Cost.	Rs. 4.61	Rs. 6.91	
6	Estimated Central Assistance	Rs. 4.15	Rs. 6.22	
7	Estimated State Contribution.	Rs. 0.46	Rs. 0.69	
8	Quantity of Foodgrains (Rice) In MTs	7450.82	6813.36	14264.18
9	Cost of foodgrains (Rs. In lacs.)	223.52	204.40	427.92
10	Estimated Central Assistance	3092.09	2825.28	5917.37
	Estimated State Contribution	342.74	313.41	656.15
	Total Conversion / Cooking Cost (Rs. in lacs)	3434.83	3138.69	6573.52
11	Number of cook cum helper engaged for state (P+UP)	15041	6491	21532
	Estimated Centre Share(@9000)	1353.69	584.19	1937.88
	Estimated State Share (@1000)	150.41	64.91	215.32
	Estimated State Share (@ 10000)	1504.10	649.10	2153.20
	Total Honorarium (Rs. in lacs)	3008.20	1298.20	4306.40
12	Required Transportation Subsidy (Rs. in lacs)	117.72	107.65	225.37
13	Total Centre Share	4787.02	3721.52	8508.54
	MME 2.70 % of centre share	129.25	100.48	229.73
	Total Centre Share	4916.27	3822.00	8738.27
14	Total State Share	1997.25	1027.42	3024.67
15	Total recurring project cost	6913.52	4849.42	11762.94
16	No. of Schools required GRANT for kitchen devices for new schools (Rs. in lacs)	2.34	0.26	2.60
17	No. of Schools required GRANT for kitchen devices for replacement (Rs. in lacs)	265.28	29.74	295.02
18	No. of schools required grant for repair of Kitchen sheds constructed ten year ago	277.38	30.82	308.20



19	Flexi Fund for 1441 school nutrition garden	100.87	43.23	144.10
20	Total non recurring	645.87	104.05	749.92
21	Total project cost recurring + non recurring:- (Rs. in lacs)	7559.39	4953.47	12512.86

Proposal of Management Monitoring and Evaluation in (MDMS)

The State has proposed to carry out following activities under MME component for which financial implication during 2020 -21 will be as under :

Financial implication :

Table- I

Deployment of manpower		(Rs. in lakhs)			
Sr. No	Particular	Tentative emolument	No of post sanctioned	Annual Liability	Remarks
1	State Project Manager (MDMS)	35000	1	4.20	Sanctioned at State HQ
2	Assistant Project Manager	23000	2	5.50	
3	State Project Coordinator	28500	1	3.40	
4	District Coordinator	20000	12	28.80	Sanctioned at State and district HQ
5	Data entry operator at State and District level	10500	13	16.40	
Total			30	58.30	

Table- II

Detail of ancillary expenses :		(Rs. in lakhs)		
S N	Particular	Name of office	Estimated liability	Total
1	Stationary and other expenses (telephone bills, toner, workshops etc.)	State	2.00	21.00
		District	6.00	
		Block	13.00	
2	Internet charges	State	1.50	31.10
		District	3.60	
		Block	26.00	
3	SMS charges	School	1.00	1.10
3	Expenses on TA/DA	State	1.50	4.00



Charges for inspection of schools and hospitality charges etc.	District	1.00	
	Block	1.50	
Total		57.10	57.10

Table- III		
Activities proposed to be undertaken (Rs. in lakhs)		
S.No	Activities	Amount
1	Capacity building of officials / training of cook-cum-helpers	50.00
2	Publicity, Preparation of relevant manuals	1.00
3	External evaluation/ State Review Mission/ Social Audit	5.00
4	Replacement/repair/maintenance of cooking device, utensils, storage bins/ eating plates /New LPG /connections to schools etc.	10.00
5	Hand wash activities	45.00
6	Providing computers at Directorate, Districts and Block Offices in phased manner (One computer to each Block)	5.00
Total		116.00
Summary:		(Rs. in lakhs)
S.No	Particular	Amount
1	Deployment of manpower (Table I)	58.30
2	Ancillary expenditure (Table II)	57.10
3	Activities proposed to be undertaken (Table III)	116.00
Grand Total		231.40

